



Notes from the
November 2019
edition
Cottrills

It was doubtless one of the wonders of the ancient world, and we call it **“Solomon’s Temple”**. But many people forget that Solomon’s father, David, made a massive investment of materials and time to prepare what was needed – from iron for nails to instructions for his nobles to an admonition to his son to remain faithful to the Lord (1 Chronicles 22). *Buildings are important, but more important is an investment in people (2 Timothy 2:2).*

We are in a unique moment here in central Mexico. Though still one of the least-reached areas in Latin America, we now have a small network of churches with an emerging leadership. Will this generation and the next remain faithful? Will they have the tools they need to reach their country and the world for Christ? Or will apathy, false doctrine, or self-obsession bring spiritual disaster? Will you help us train up new leadership in order to reach this generation, and so that future generations may know our great God of peace?



♪ Notes of Prayer and Praise ♪

♪ Please pray for Hannah as she prepares to serve on a mission team going to Columbia in February.

♪ Praise the Lord that we’re seeing a growing hunger for God’s Word, and desire to know the Lord better!

♪ Please pray for our urgent financial needs – that God would provide daily for our family and ministry.

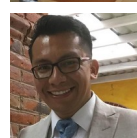
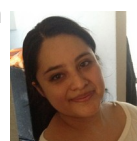
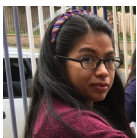
♪ Praise the Lord – the church in Las Palmas celebrates 3 years of meeting together this month!

♪ We have seen some serious spiritual attacks on families in our churches here. Please pray that God would give grace and wisdom.

Training and Entrusting for Outreach . . .

We praise the Lord for times of formal training and informal conversation! What a joy to show someone how to look up Bible verses, how to think in a deeper way about a Bible passage, and how to apply God’s truth to their lives.

Here’s some of the more formal current training – thanks to your support, encouragement and prayers!



- **Spiritual Discernment Study:** A five part study, helping us to think through how to apply God’s Word to our daily lives, and how to discern with grace, patience and humility in a world with so much confusion.
- **Biblical Hermeneutics:** A 40 hour course taught by some friends from the USA, hopefully the beginning of much more formal training. Emerging leaders from four churches are attending (see picture above)!
- **Hebrews, Prophecy, Daniel:** This month we finish our amazing study of the book of Hebrews! Next is a series on prophecies of the Messiah, and then a study of Daniel. There is a lot of confusion here about the use of the Old Testament. These studies have been a great way to understand *all* of God’s Word!
- **In our family:** We’re excited that Hannah and a team of like-minded young women from her high school class are preparing for a short term mission trip to Columbia in February (6-18)!

Please pray for the leaders and emerging leaders of our three churches. Pictured are just a few people, representing many more, that you can pray for right now! Here are their names and the church they’re involved in: LEFT: **Martin** (Santa Bárbara), **Sandra** (Las Palmas), **Samuel** (Jesús María). RIGHT: **Gabi** (Jesús María), **Oscar** (Las Palmas), **Ismael** (Jesús María).

Financial Update: Important Year-end Details

If you’ve been on our Support Team for a long time, you know that we don’t often talk about finances in our newsletter, or even when we are on sharing in Canada. This is because we have faithful, generous supporters who have made this growing ministry in central Mexico possible for the past 13 years.

But for several reasons, we now have an urgent need. First, the issue we discussed in our last newsletter that put us unexpectedly thousands of dollars behind. Second, rising costs in general. Third, a loss of some monthly supporters. Fourth, unexpected expenses such as Jim’s time in Canada during his Dad’s illness/funeral. This has created a “perfect storm” financially.

So we do need to focus for a while on bringing stability back to our ministry from a financial perspective. There are two ways that you can help:

1) We are in urgent need of new monthly pledges – about CAD\$1300 (USD\$970) per month. A typical monthly donation to our support being about CAD\$100, that would mean 13 new supporters (though of course you’re welcome to give more or less), or it could include some people increasing their monthly support. *One clarification – we actually would need more than that to get our pledges up to 100%. However, thanks to many generous one-time gifts, we should be able to get by with that amount.*

2) Because donations go up and down significantly throughout the year, we heavily rely on year-end one-time donations to ensure we get paid the rest of the year. Your extra gifts in December (and/or November) should help us get by while we get our pledges up to where they need to be.

Thank you so much for your prayers, support, and encouragement in this difficult time!

Grace & Peace,

*Jim & Shari
Hannah, Nathanael*

To update your address or change other preferences, please visit:
<http://bit.ly/join-change>

The Cottrill Family | c/o Avant Ministries | 2121 Henderson Highway | Winnipeg, MB R2G 1P8
403-276-9505 | CottrillCompass.com | Finding-direction.com

Avant in Canada: 2121 Henderson Highway | Winnipeg, MB R2G 1P8 | 800-468-1892
Avant in the USA: 10000 N Oak Trafficway | Kansas City, MO 64155 | 866-812-8268

